

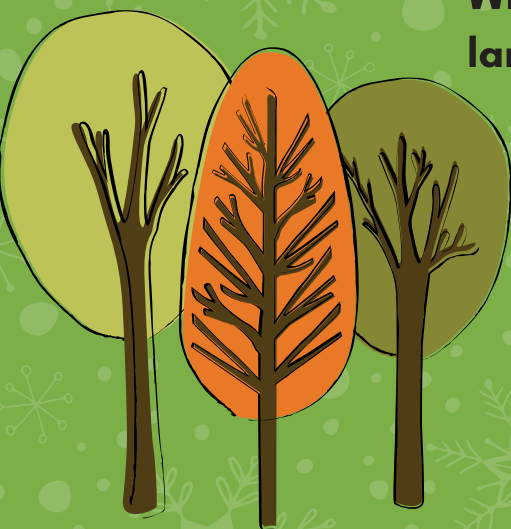


# WINTER LANDSCAPING CHECKLIST

SCHILLLANDSCAPING.COM

## WINTERIZE PLANTS

Winterizing is the process of preparing your landscape for winter.



- Remove dead leaves from turf to increase air flow.
- Wrap plants to protect them from harsh winter weather.
- Spray your plants with anti-desiccant to keep them from drying out (sometimes called winter burn).
- Cut back tall grasses before the brunt of winter hits to help prevent the mess they make after they die out.

## DORMANT PRUNING

Dormant pruning is the cutting of plants when they are not growing. Here are some of the biggest benefits:



- Perennials are generally less susceptible to disease in cooler temperatures and when they're not growing.
- Even drastic cut backs can be less noticeable in the winter, when outdoor spaces get less use.
- Winter pruning can set your plants up for an entire season of healthy new growth.

## REDUCE SAFETY HAZARDS

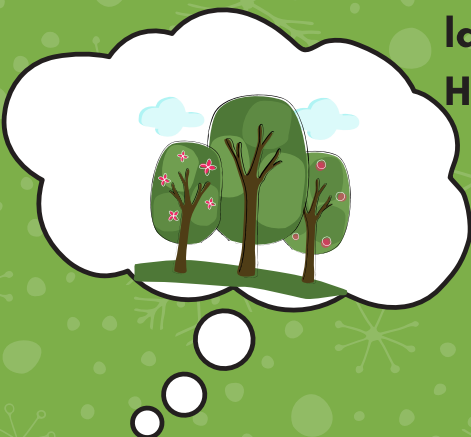
Many of the landscaping features you enjoy most in warmer months can be dangerous for pedestrians and drivers when snow and ice come into play. Make sure to:



- Pre-treat all entrances, walkways, and ramps with deicer to prevent slippery surfaces.
- Clear common shortcuts and "off the beaten path" areas.
- Cut back trees and shrubs that block sight lines or walkways.

## PLAN SPRING PROJECTS

Winter is a great time to assess what your landscape will need to look its best in the spring. Here are some projects that can add instant value:



- Remove dead or diseased trees.
- Improve landscaping around entrances and signs
- Consider smart irrigation upgrades to save money on water. stand out 24/7.
- Got lighting? Install or update your lighting system to make your property stand out 24/7.